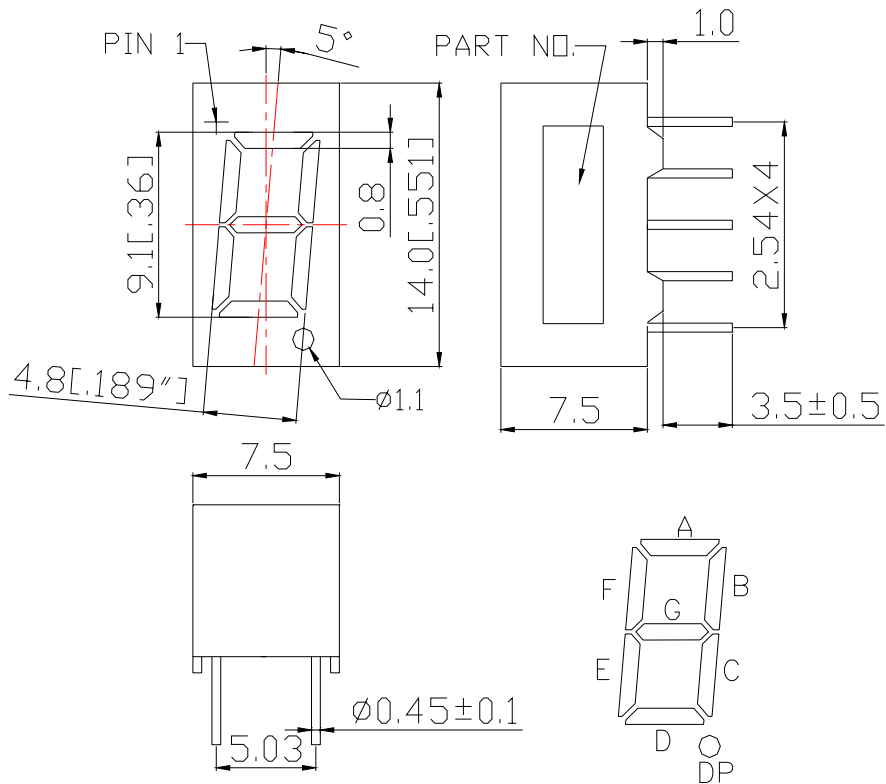


**WCN1-0036GU-A11U****SPECIFICATION**

<b>WCN</b>			<b>CUSTOMER</b>
<b>Prepared by</b>	<b>Checked by</b>	<b>Approved by</b>	<b>Confirmed</b>

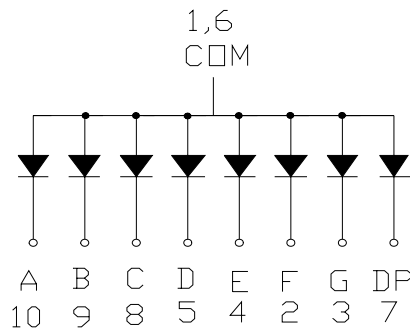


### Outer Dimension:



Notes: Unless otherwise stated, The tolerance is  $\pm 0.25$ mm.

### Circuit Diagram:



### Pin Connection:

PIN NO.	CONNECTION	PIN NO.	CONNECTION
1	Common Anode	6	Common Anode
2	Cathode F	7	Cathode DP
3	Cathode G	8	Cathode C
4	Cathode E	9	Cathode B
5	Cathode D	10	Cathode A

■ **Features:**

- High Reliability
- Color: Yellow Green
- Low Power Requirement
- Easy Assembly

■ **Description:**

- Single Digit LED Display
- Digit Height: 9.10 mm(0.36" )
- Black Face and Milky Segment

■ **Absolute Maximum Rating (Ta=25°C):**

Parameter	Symbol	Condition	Color	Rating	Units
Power Dissipation Per Segment	P <sub>d</sub>	—	Yellow Green	65	mW
Forward Current Per Segment	I <sub>F</sub>	—	Yellow Green	25	mA
Derating Of If Per Segment	△I <sub>F</sub>	Ta ≥ 25°C	Yellow Green	0.30	mA/°C
Peak Forward Current Per Segment	I <sub>FP</sub>	1/10 Duty 10KHz	Yellow Green	100	mA
Reverse Voltage Per Segment	V <sub>R</sub>	—	Yellow Green	5	V
Operating Temperature Range	T <sub>opr</sub>	—	—	-35~+85	°C
Storage Temperature Range	T <sub>stg</sub>	—	—	-35~+85	°C

■ **Electrical/Optical Characteristics Rating(Ta=25°C)**

Item	Symbol	Test conditions	Location	Rating			Units
				Min.	Typ.	Max.	
Forward Voltage	V <sub>F</sub>	I <sub>F</sub> =20mA	Per Segment	1.80	2.25	2.60	V
Reverse Current	I <sub>R</sub>	V <sub>R</sub> =5V	Per Segment	—	—	100	μA
Luminous Intensity	I <sub>V</sub>	I <sub>F</sub> =10mA	Per Segment	1256	2500	—	μcd
Peak Emission Wave Length	λ <sub>P</sub>	I <sub>F</sub> =20mA	Per Segment	—	568	—	nm
	λ <sub>D</sub>				572		
Spectral Line Half Width	△λ	I <sub>F</sub> =20mA	Per Segment	—	30	—	nm
Luminous Intensity Matching Ratio(Segment To Segment)	I <sub>v-m</sub>	I <sub>F</sub> =10mA				2:1	

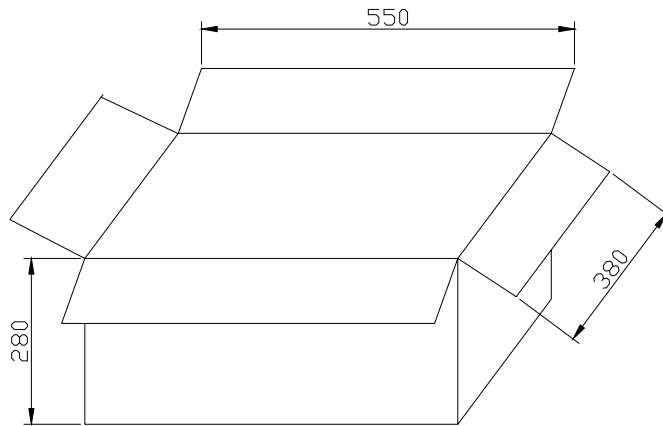
■ **Luminous Intensity Sorting: (Luminous Intensity Tolerance is +/-10%)**

Rank	Symbol	Condition	Min	Max	Unit
H	H	I <sub>F</sub> =10mA	1256	2000	μcd
I	I	I <sub>F</sub> =10mA	2001	3200	μcd
J	J	I <sub>F</sub> =10mA	3201	5050	μcd

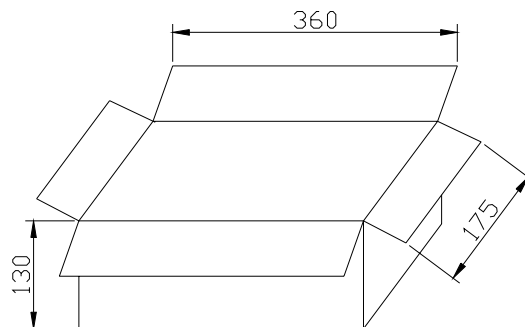
■ **Hue Grade: I<sub>F</sub> =10mA (Hue:+/-1nm)**

Rank	Symbol	Hue Rnge	Units
3	3	569.1~571.0	nm
4	4	571.1~573.0	nm

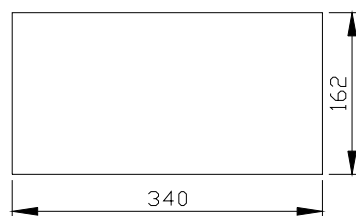
■ **Soldering Conditions: Soldering Temp. ≤+260°C Soldering Time. ≤3sec.**  
 (at 2mm Distance from The Case of Reflector Edge)

**Outer Carton Dimension:**

- Note:**
1. An Outer carton contained 6 Inner cartons and 15480 PCS products.
  2. Unless otherwise stated, the tolerance is +5mm / -0mm.
  3. The carton material is A=A Brown Paper.

**Inner Carton Dimension:**

- Note:**
1. An Inner carton contained 6 PCS Foam Board and 2580 PCS products.
  2. Unless otherwise stated, the tolerance is  $\pm 3$  mm.

**Steamed Foam Dimension:**

- Note:**
1. A Steamed Foam contained 430 PCS products.
  2. Unless otherwise stated, The tolerance is  $\pm 2$  mm.