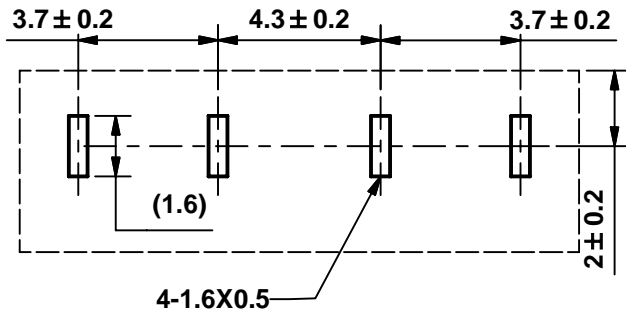
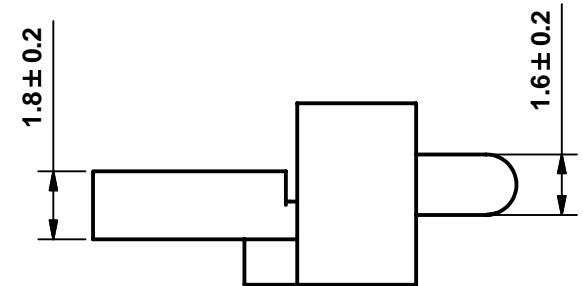
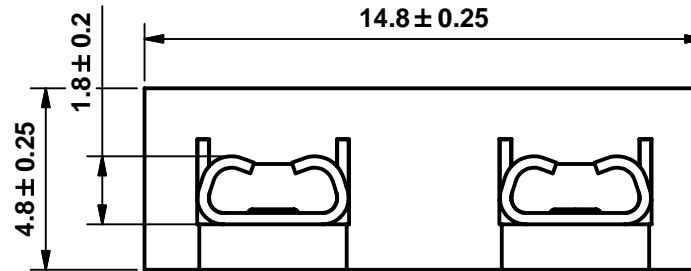
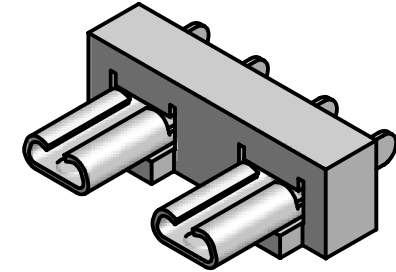
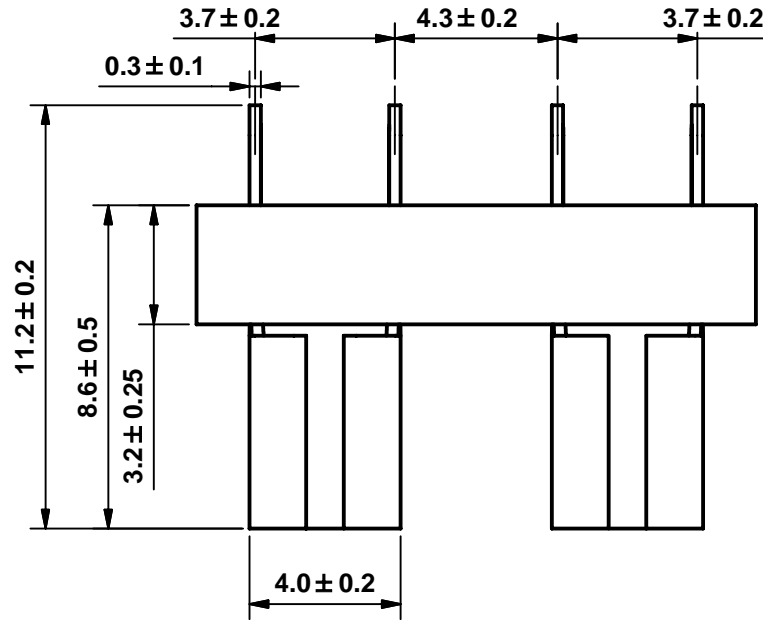


FUSE CLIP P.C.BOARD TYPE FOR
ATS BLADE FUSE
SPECIFICATIONS:



- *Electical:Rating for currents up to 15A
- *Material:Phosphor Bronze Thickness=0.3mm
- *Finish:Tin-plated or Nickel-plated
- *Ear or earless type, with axial and direction tags.

#Specifications :

- 1.Insertion & Extraction Force=1kg.Min.
- 2.Dielectric Strength For 60 Seconds=AC 500 V Min.
- 3.Suitable Rated Current=15A 250V
- 4.Insulation Resistance At 500 V DC=100M Ω Min
- 5.Temperature Rise=50°C Max.
- 6.Voltage Drop=20m V Max.



MOUNTING HOLES

UNLESS OTHERWISE SPECIFIED DIMENSIONS ARE IN MM TOLERANCE DECIMALS ANGULAR X± 0.5 ± 2' XX± 0.25 DO NOT SCALE DRAWING	CUSTOMER NO.	JENN FENG ELECTRIC INDUSTRIAL CO., LTD
	DRAWN BY 施素玲	
 	CHECKED BY	FUSE CLIPS
	APPROVED BY	
MATERIAL	DATE 2004/11/9	DRAWING NO. AA04110901
REV 1.1	SCALE	